



SERIES 940

Automations for sliding doors

FAAC
Simply automatic.

SERIES 940

Telescopic automations for sliding doors

with single or double motor for very heavy leaves and continuous duty

■ An automated system line designed to meet all your needs

- **940 SM** max. capacity 110+110 or 140 kg each leaf
- **940 SMD with double motor** max. capacity 180+180 or 250 kg each leaf
- **940 SMA and SMDA with self-supporting head profile** for fixing the automated system between two walls or an aisle
- **940 SMT Telescopic** with two or four sliding leaves.

■ Reliability

Thanks to the careful choice of high technology mechanical and electronic components Faac Series 940 SM-SMD-SMT automations for sliding doors are certified for over **2,000,000 opening and closing cycles** and have no limits in the frequency of use.

Motor and microprocessor electronic control unit undergo a severe quality control program before delivery.

■ Safety with no compromises

Thanks to their "self-learning" function, the Series 940 automations automatically set the opening and closing forces according to the friction and the leaf weight in conformity with the relevant safety standards.

In the event of a power cut, buffer batteries (optional) with charge control guarantee 100% operation for thirty minutes.

■ Excellent logics

The operation logics can be selected with the SD Keeper or SDK Light functions keypads, which also signal and display any faults through their diagnostics functions.

The assembly and installation procedures of Series 940 have been conceived and designed to optimize the installation times thanks to the wide working area, the easy fitting of trolley/belt, the concept of the drive module and the limit switches on the support profile. Moreover, the easy-to-assemble housing can be locked in the open position and therefore it can be easily manoeuvred by one operator. In this way, installation or maintenance costs are even lower.



3 Trolleys with steel wheels and teflon rail



Automatic adjust

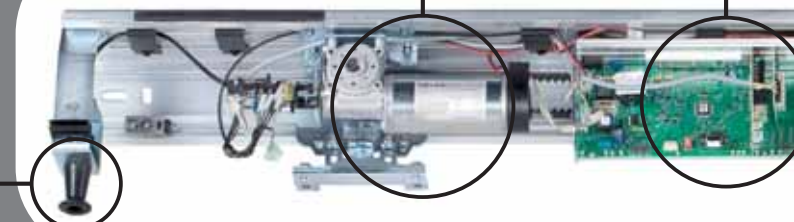
Open and closed positions identification
 Measurement of leaf weights and dimensions
 Selection of optimum speed, acceleration and deceleration
 Photocell test
 Anti-crushing safety at 150 N

- 1 Motor with electrical lock
- 2 Microprocessor control unit
- 3 Trolleys with steel wheels and teflon rail
- 4 Toroidal transformer and emergency batteries
- 5 Drive trolley
- 6 Knob for manual release
- 7 Eyelets for a fast mechanical installation

6

1

2



Accessories

- Self-supporting head profile
- Electro-mechanical lock with internal release
- Miniswitch GLS photocell
- Infra-red passive sensor
- Microwave radar
- Wall-mounted and flush-mounted keyswitches T20/T21 with emergency release devices
- Profiles for glass leaf fitting
- Lock monitor with activation of indicator-lights or buzzers in the event of a lock malfunction
- Break-out anti-panic kit (only for SM-SMA version)**
- The emergency batteries with charge control board guarantee the automated system to operate for 30 minutes on continuous use**

Use

Model

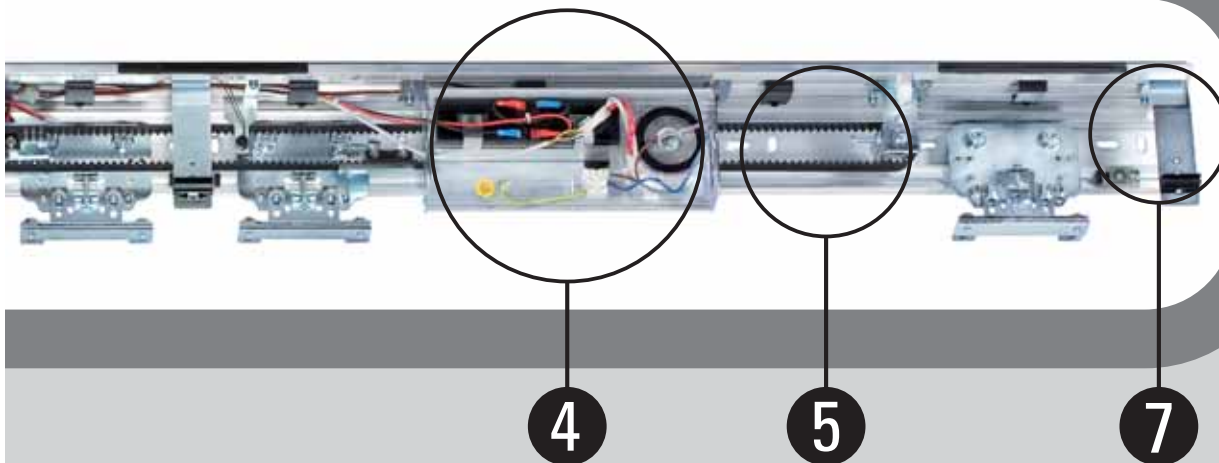
- 940 SM1
- 940 SM2
- 940 SMA1
- 940 SMA2
- 940 SMD1
- 940 SMD2
- 940 SMDA1
- 940 SMDA2
- 940 SMT2
- 940 SMT4
- 940 SMTA2
- 940 SMTA4



Technical specifications

940 SM

Electric power supply	230 V ac (+6%-10%) 50 (60) Hz
Power consumption	100 W
Frequency of use	100%
Drive unit	24 V dc motor with encoder
Head profile length	VP x 2 + 100 mm
Drive	by electro-driven toothed belt
Opening/closing speed	adjustable (two leaves) 20÷180 cm/s
Emergency opening/closing speed	adjustable
Pause time	adjustable from 0 to 30 s
Static force	150 N (self-learning adjustment)
Partial opening	adjustable (two leaves) from 10% ÷ 90% of total travel
Anti-crushing device	standard
Photocells fail-safe	standard (can be excluded)
Protection class	IP 23 (for indoor use only)
Environmental temperature	-20°C ÷ +55°C



4

5

7

Leaf	Free passage width (mm)	Leaf max. weight (kg)	Self-supporting (head profile length mm)
single	700÷3,000	140	NO
double	800÷3,000	110 + 110	NO
single	700÷3,000	140	YES (max. 3,000)
double	800÷3,000	110+110	YES (max. 3,000)
single	700÷2,900	250	NO
double	800÷3,000	180 + 180	NO
single	700÷2,900	250	YES (max. 3,000)
double	800÷3,000	180 + 180	YES (max. 3,000)
single tel.	1,100÷3,000	110 + 110	NO
double tel.	1,400÷4,000	60+60+60+60	NO
single tel.	1,100÷3,000	110 + 110	YES (max. 3,000)
double tel.	1,400÷4,000	60+60+60+60	YES (max. 3,000)

version

DOUBLE MOTOR

940 SM

230 V ac (+6%-10%) 50 (60) Hz

100 W

100%

24 V dc motor with encoder

VP x 2 + 100 mm

by electro-driven toothed belt

adjustable (two leaves) 20÷180 cm/s

adjustable

adjustable from 0 to 30 s

150 N (self-learning adjustment)

adjustable (two leaves)

from 10%÷90% of total travel

standard

standard (can be excluded)

IP 23 (for indoor use only)

-20°C ÷ +55°C



Worldwide Market Access



ATTESTATO DI CONFORMITA' ALLE SPECIFICHE TECNICHE
N°54911-250CSPEC

Apparato	Sistema di automazione per porte scorrevoli pedonali
Richiedente	FAAC S.p.A. Via Benini, 1 40069 Zola Predosa (BO) ITALY
Costruttore	FAAC S.p.A. Via Benini, 1 40069 Zola Predosa (BO) ITALY
Modello / Tipo	940 SM...
Dati tecnici	230 V - 50 Hz
Manutenzioni aggiuntive	Motore singolo o doppio - Attivazione porte ad ante singole o doppie
Varianti	<ul style="list-style-type: none"> - Serie 940 SM (motore singolo - SM1, ante singole - SM2, ante doppia) - Serie 940 SMD (doppio motore - SMD1, ante singola - SMD2, ante doppia) - Serie 940 SMA (motore singolo, autoportante - SMA1, ante singola - SMA2, ante doppia) - Serie 940 SMDA (motore singolo, autoportante - SMDA1, ante singola - SMDA2, ante doppia)
L'apparato provato e risultato conforme alle(s) specifiche(s)	Richieste del Cliente: Prova di vita del sistema - 2.000.000 di cicli senza manutenzione
I risultati delle prove eseguite sono riportati nel(l) rapporto(i) di prova	Nemko SpA - Order No. 54911TRF8AF del 2005-04-28

Questo Attestato di Conformità alle Specifiche Tecniche si riferisce ad(i) campione(i) provato(i), non include la sorveglianza della produzione e non permette l'apposizione del marchio Nemko sul prodotto.

Data di emissione: 2005-04-28

Nemko S.p.A.
Certificatori (srl)
Haus
(Roberto Favre)

Questo documento è composto da 1 pagina

Nemko SpA
Via Tomaso Fossati, 148

T +39 050701031 + 6
F +39 050701040

www.nemko.com
www.nemko.it

Automated system certified for 2,000,000 continuous cycles without maintenance

Time slot programmable calendar management

PROGRAMMING DISPLAY

Main functions

Entering of access password	Opening speed adjustment
Closing speed adjustment	Anti break-in function management
Pause times adjustment	Anti-crushing adjustment
Diagnostic display	Weekly calendar management

Management of interlock with or without memory
 Selection of battery operation logics
 Configuration of 3 outputs on the control unit
 Configuration of 2 emergency inputs on the control unit
 Display of number of cycles carried out
 Management of 5 daily time slots



Programming display

SD KEEPER FUNCTIONS KEYBOARD

Main functions

Manual	Open
Automatic	Partial opening
One way	Night
Reset	One way, partial

Troubleshooting through a combination of flashing LEDs
 Operation can be disabled by a jumper or a combination of keys
 Preset for programming display



SD Keeper functions keyboard

SDK LIGHT

Main functions

Manual	Open
Automatic	Partial opening
One way	Night
Reset	One way, partial

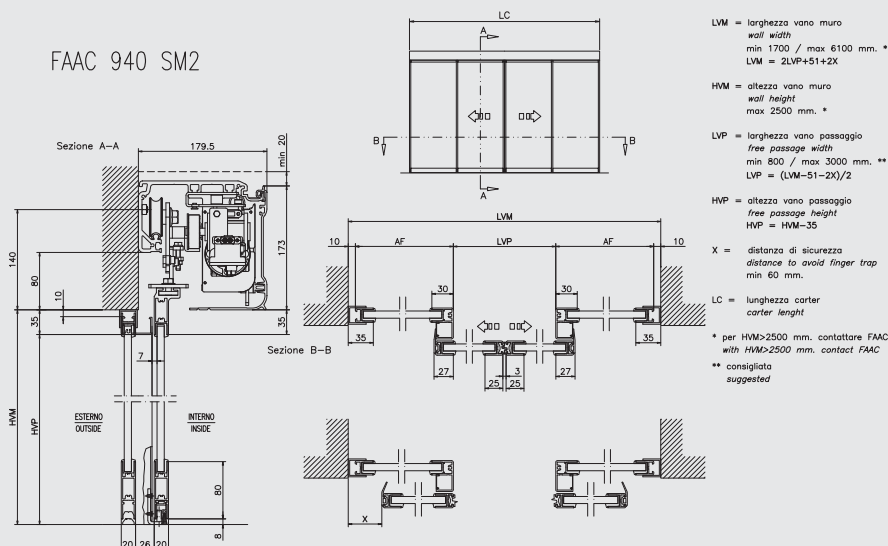
Troubleshooting through a combination of flashing LEDs
 Operation can be disabled by a combination of keys
 Not preset for programming display



SKD Light functions keyboard

SMALL SECTION PROFILES TK 20

FAAC 940 SM2



HEADQUARTERS

FAAC SpA
Via Benini, 1 – 40069 Zola Predosa (BO) – Italy
Tel. +39 05161724
Fax +39 051 758518
www.faacgroup.com – info@faac.it

FAAC SUBSIDIARIES

FAAC AG
Tel. +41 52 3461721
Fax +41 52 3461723
Illnau, Switzerland
www.faac.ch

FAAC FRANCE
Tel. +33 472218700
Fax +33 472218701
Corbas, France
www.faac.fr

FAAC GMBH
Tel. +49 8654 49810
Fax +49 8654 498125
Freilassing, Germany
www.faac.de

FAAC MIDDLE EAST
Dubai, Emirati Arabi
www.faac.ae
info@faac.ae

F.A.A.C. SA
Tel. +34 91 6613112
Fax +34 91 6610050
Madrid, España
www.faac.es

FAAC UK LTD.
Tel. +44 1256 318100
Fax +44 1256 318101
Basingstoke Hampshire, UK
www.faac.co.uk

FAAC AUSTRALIA PTY LTD
Tel. +61 2 7565644
Fax +61 2 87565677
Homebush – Sydney, Australia
www.faac.com.au

FAAC NORD
Tel. +33 1 69191620
Fax +33 1 69536069
Massy, France
www.faac.fr

FAAC INDIA PVT. LTD
Tel. +91 120 3934100/4199
Fax +91 120 4212132
Noida – Delhi, India
www.faacindia.com

FAAC POLSKA SP.ZO.O.
Tel. +48 22 8141125
Fax +48 22 8142024
Warszawa, Polska
www.faac.pl

F.A.A.C. SA Delegación Cataluña
Tel. +34 93 4362000
Fax +34 93 4368225
Barcelona, España
www.faac.es

FAAC BENELUX
Tel. +32 50 320202
Fax +32 50 32024215
Brugge, Belgium
www.faac.be

FAAC GE.S. M.B.H.
Tel. +43 662 8533950
Fax +43 662 85339520
Wals – Siezenheim, Austria
www.faac.at

FAAC INTERNATIONAL INC.
Tel. +1 307 6351991
Fax +1 307 6328148
Cheyenne, USA
www.faacusa.com

FAAC SCANDINAVIA AB
Tel. +46 36 376860
Fax +46 36 370780
Bankeryd, Sweden
www.faac.se

FAAC SHANGHAI
Tel. +86 21 68182970
Fax +86 21 68182968
Shanghai, China
www.faac.com.cn

